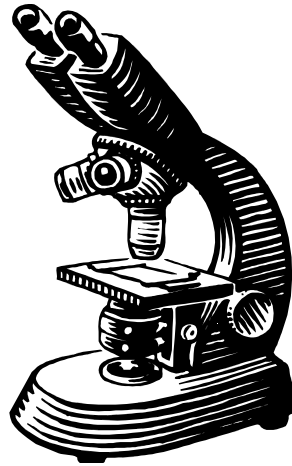
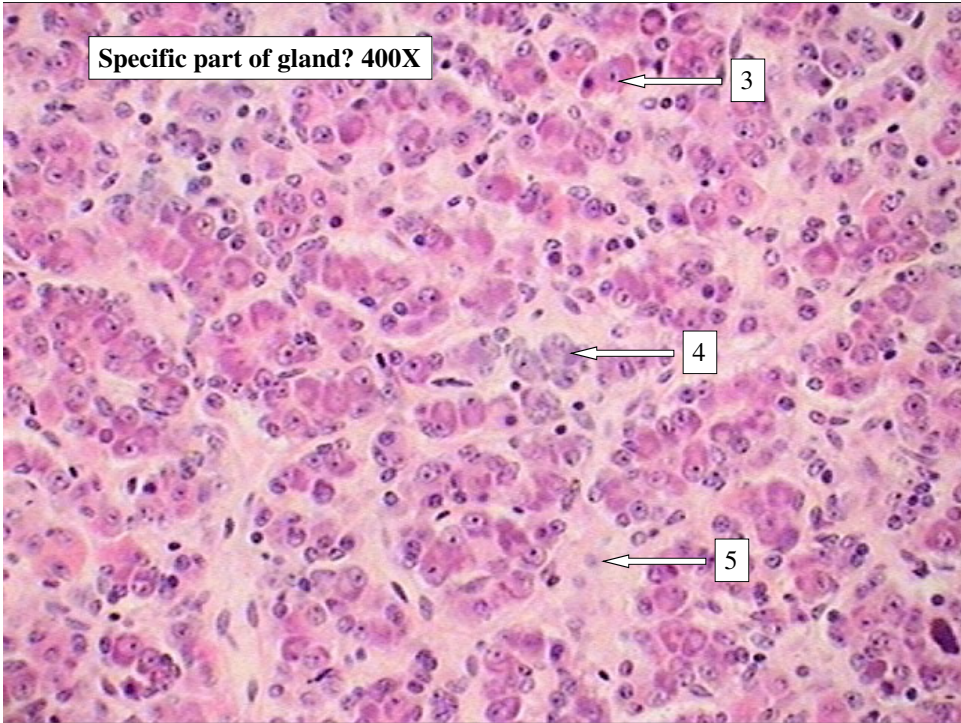
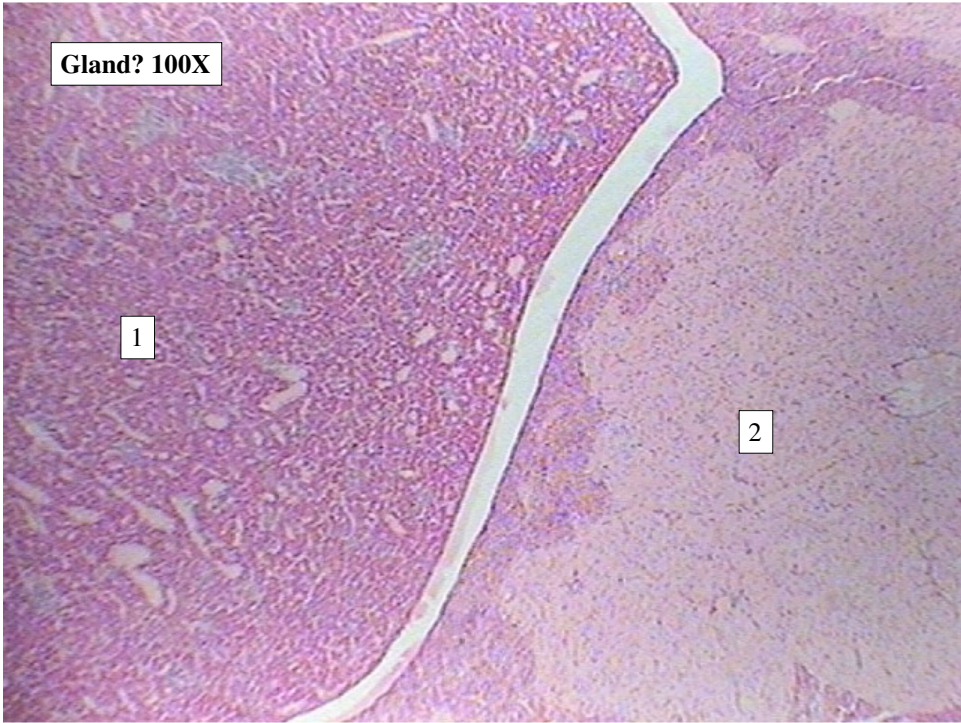


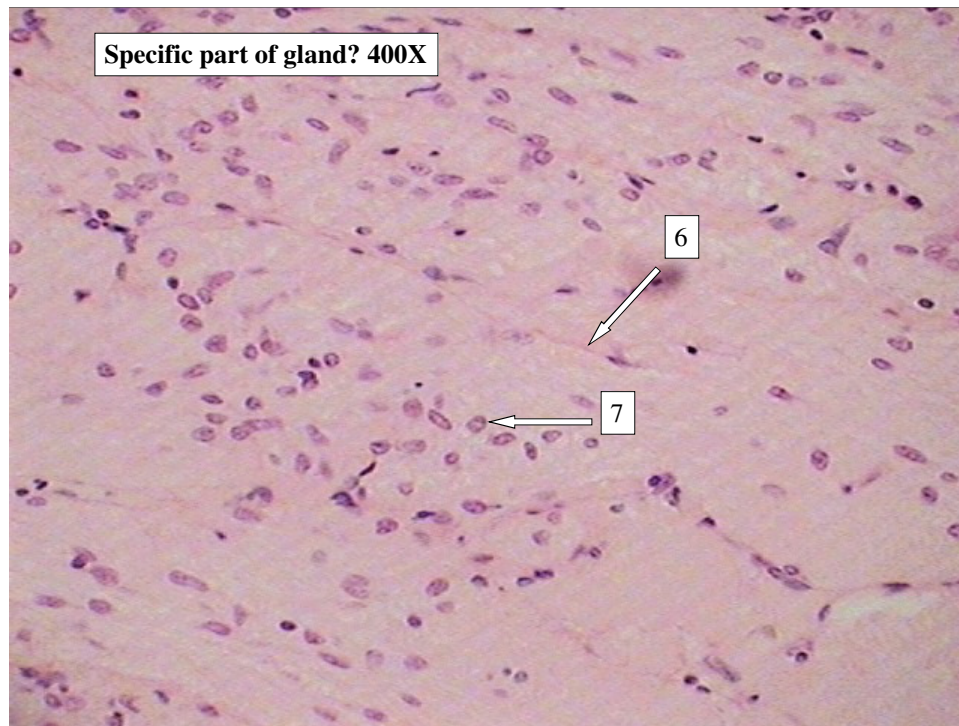
Bio & 242 Unit 4
Labs 1 and 3



**Histology Slides for the
Endocrine System**

- Slides are presented in order of magnification
- As you view the following slides, make sure you can accomplish these goals:
 1. Can you identify the vessels and tissue layers observable on the slides?
 2. Can you identify the specific structures or layers indicated by the numbered arrows or brackets?
- At the end of a sequence, you will find the answers to the above for each vessel and layer





Pituitary Gland or Hypophysis

Slide #1

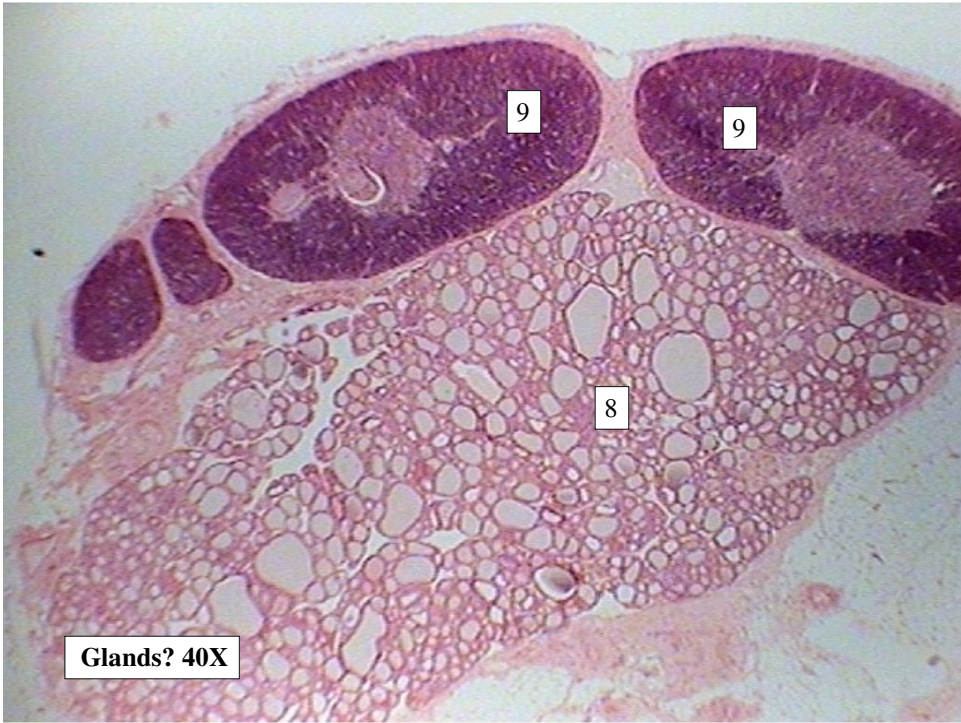
- Anterior Pituitary Gland or Adenohypophysis
- Posterior Pituitary Gland or Neurohypophysis

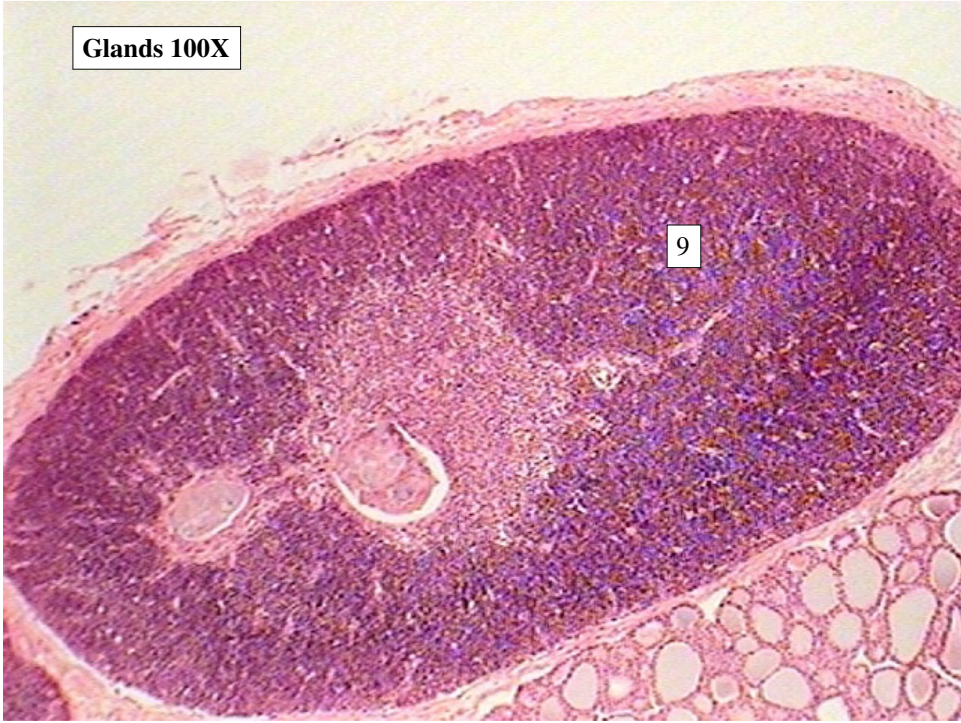
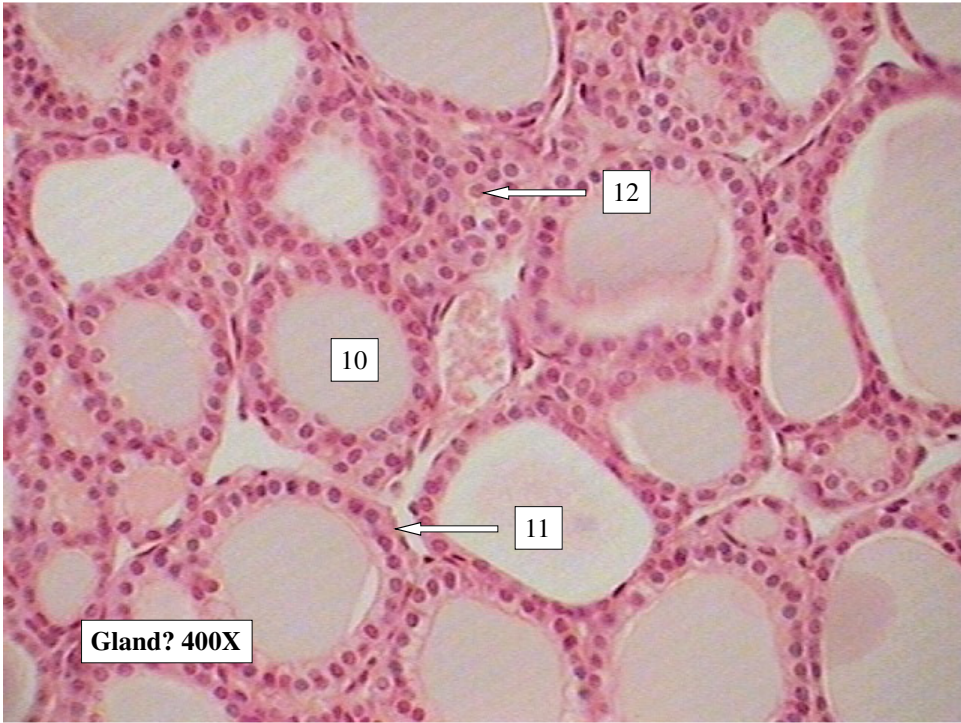
Slide #2

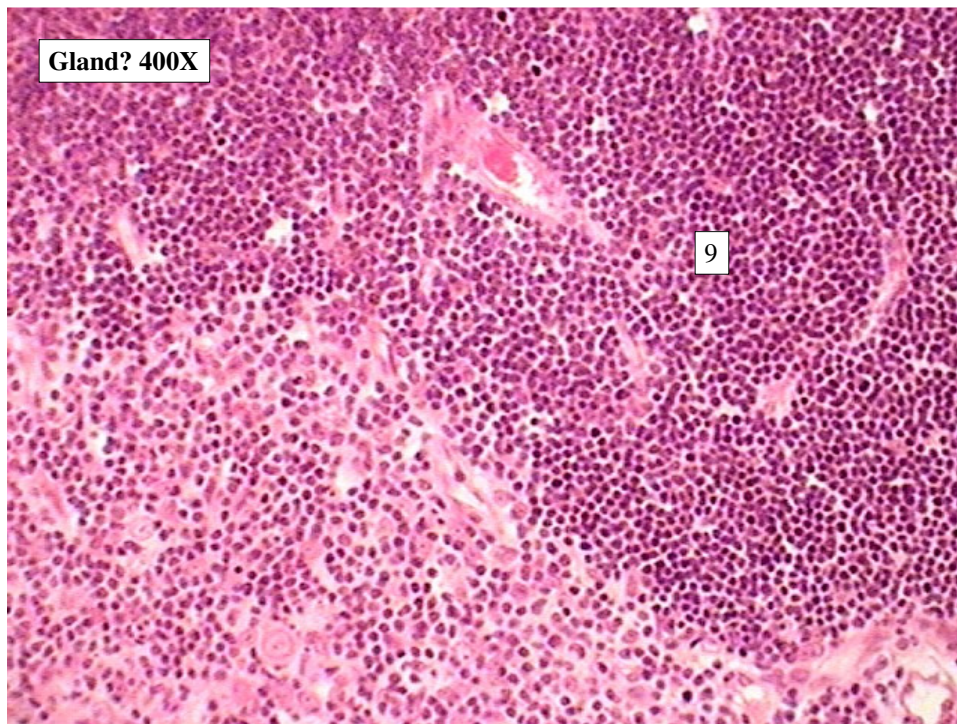
3. Acidophils
4. Basophils
5. Chromophobes

Slide #3

6. Axons of Hypothalamic neurosecretory cells
7. Pituicytes or supportive cells



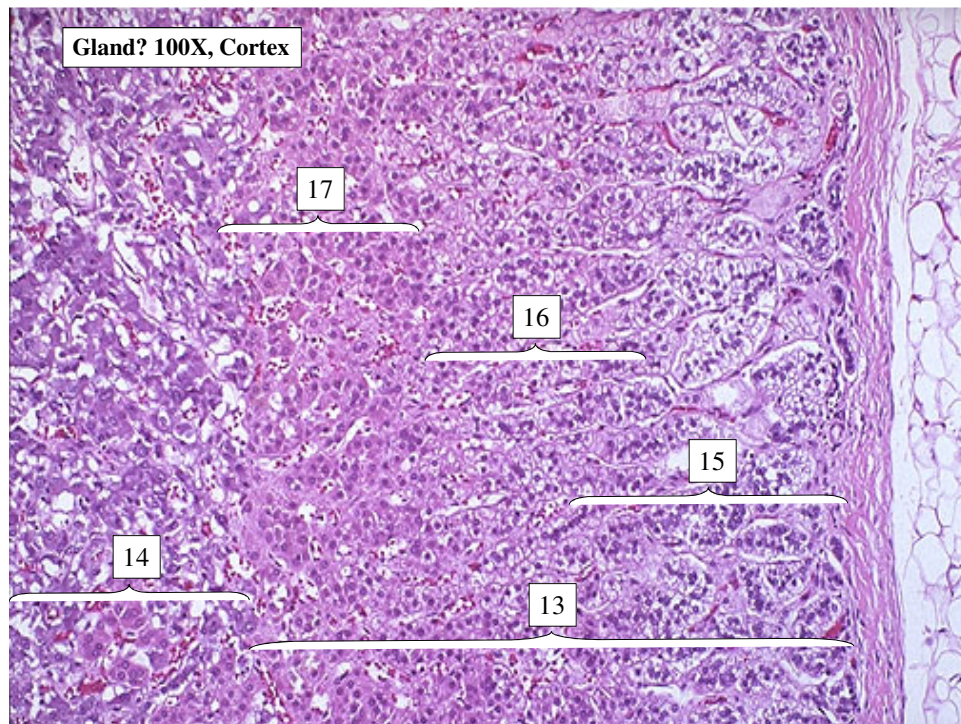




Thyroid and Parathyroid Glands

Slides #5, #6, #7, #8, and #9

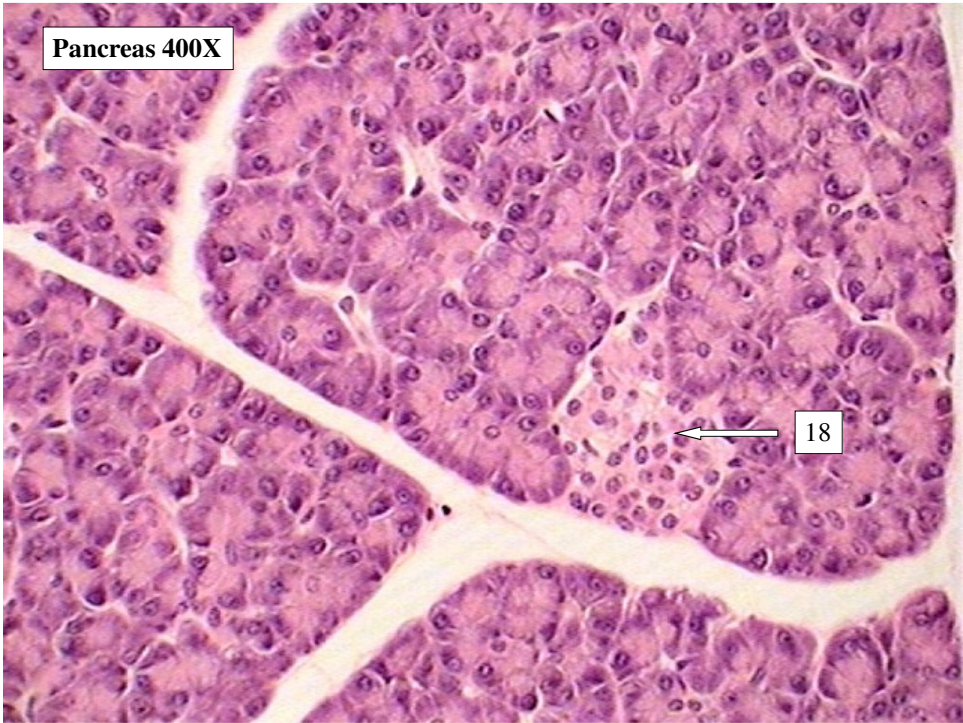
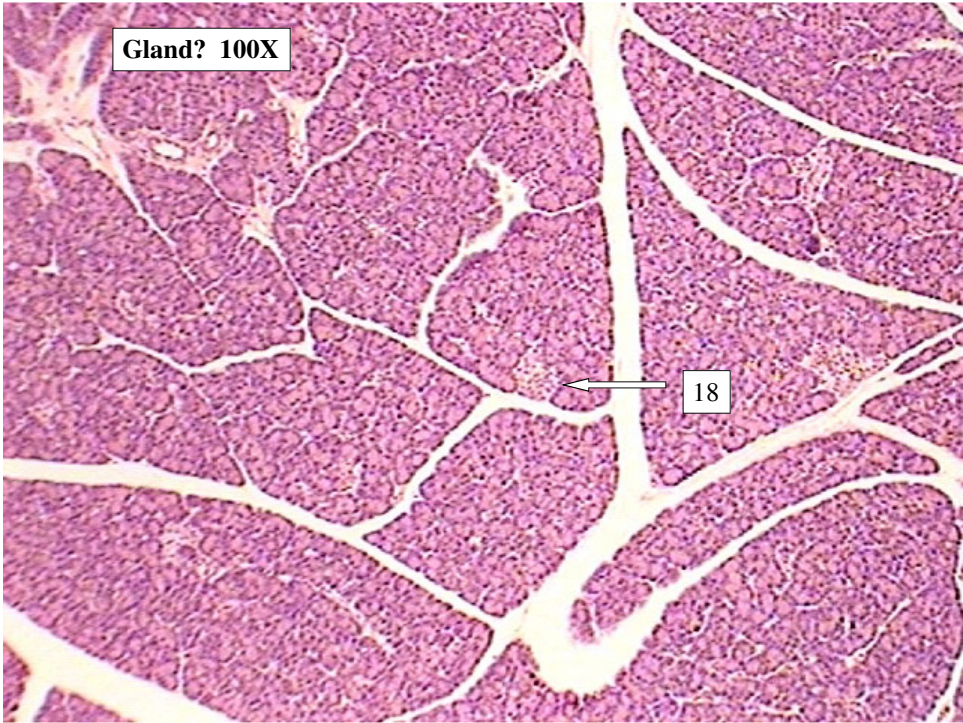
8. Thyroid Gland
9. Parathyroid Glands (principal cells)
10. Thyroid follicle
11. Follicular Cells
12. Parafollicular Cells



Adrenal Gland

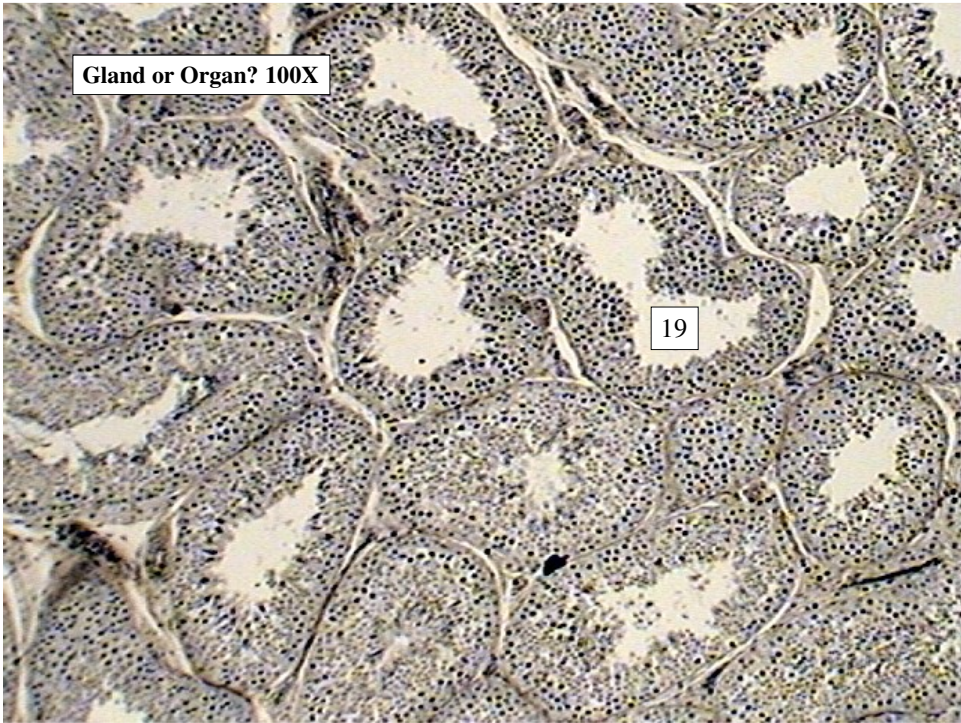
Slide # 11

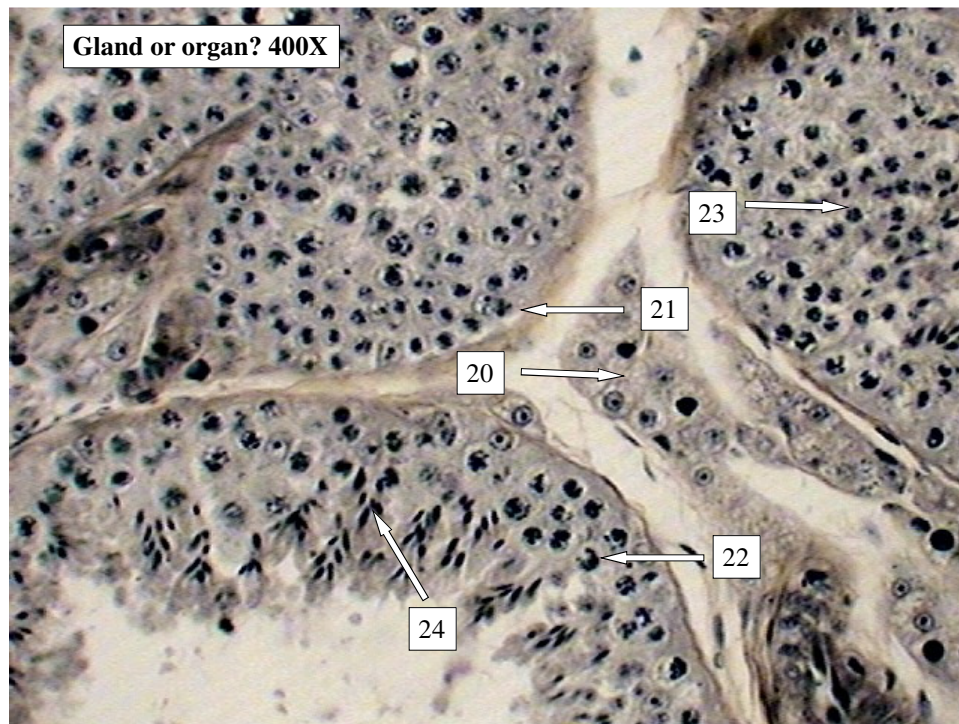
- 13. Adrenal Cortex
- 14. Adrenal Medulla
- 15. Zona glomerulosa
- 16. Zona fasciculata
- 17. Zona Reticularis



Pancreas

18. Islet of Langerhans





Testes

Slide # 16

19. Seminiferous tubules

Slide # 17

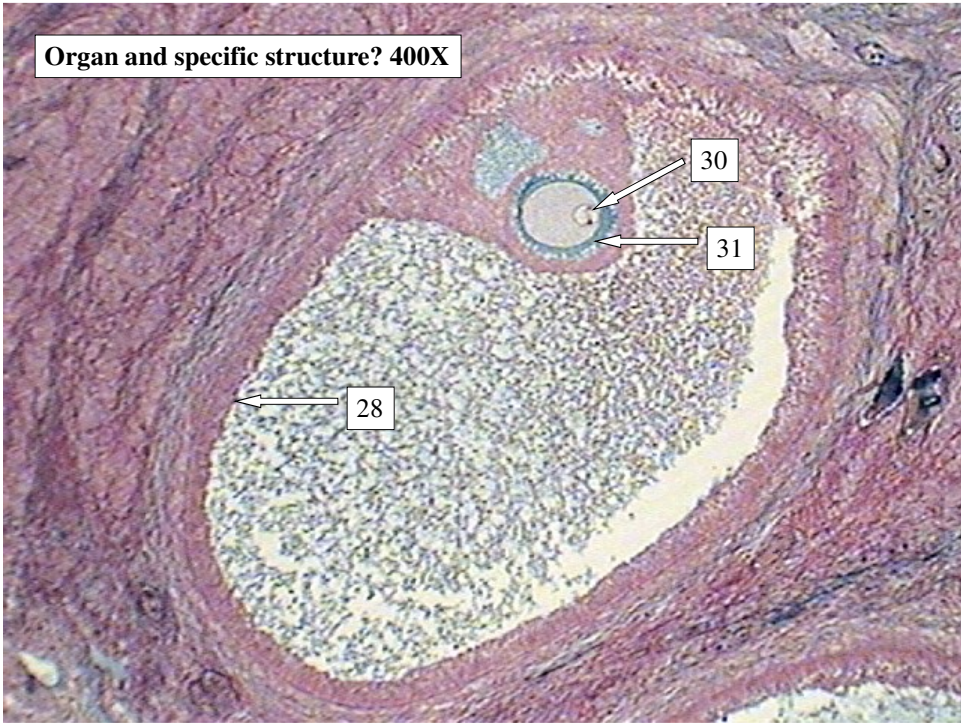
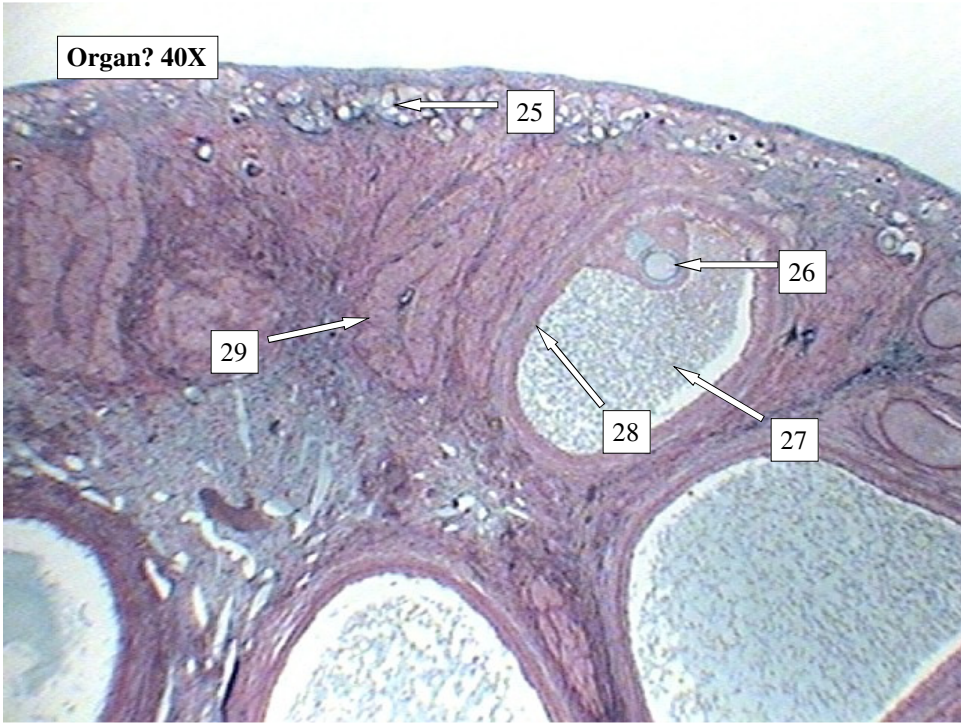
20. Cells of Leydig or interstitial cells

21. Spermatogonium ($2n$ stem cells)

22. Primary spermatocyte

23. Secondary spermatocytes

24. Late spermatids





Ovary

Slide #19, #20, and #21

- 25. Primordial follicles containing primary oocytes
- 26. Primary oocyte in a Graafian follicle
- 27. Antrum of the follicle
- 28. Follicular or granulosa cells
- 29. Corpus Luteum
- 30. Primary oocyte undergoing meiosis I (note two bands of chromosomes)
- 31. Zona pellucida
- 32. Old follicular antrum